



St. Stephen's Road London, E6 1AX

Edward Chase present this fantastic newly renovated four bedroom and three bathroom house located within a short walk to Upton Park tube station (District and Hammersmith & City Lines) making it an ideal home for all working professionals and families alike who want a modern yet warm home. Some of the main features of the property are a large kitchen diner with integrated appliances including a dishwasher and TV/broadband plug points within every room. The property is available to rent now, call Edward Chase now not to miss this opportunity. Property features; - 4 double bedrooms & 3 Bathrooms - Separate spacious reception room - Kitchen diner - Integrated appliances including washing machine, dishwasher and fridge freezer - Large basement for storage - TV and broadband plug points within every room - Newly renovated throughout to high spec - Brand new carpets and flooring throughout - Excellent condition - Gas central heating combination boiler

- Newly Refurbished Amazing 4 Bedroom, 3 Bathroom House with a Private Reception and Additional Kitchen/Diner Area
- Newly Fitted Kitchen With Integrated Appliances Including Fridge Freezer, Dishwasher and Washer/Dryer
- All Double Bedrooms Throughout Providing You With Ample Space For Your Belongings
- Newly Carpeted Throughout the First Floor With Flooring on the Ground Floor
- TV and Broadband Plug Points Within Every Room

Monthly Rental Of £2,499

St. Stephen's Road

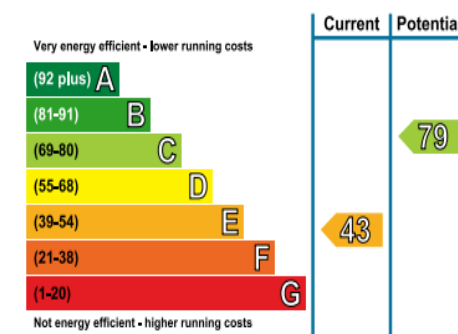
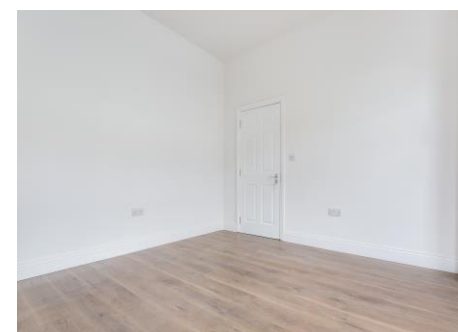
London, E6 1AX

Monthly Rental Of £2,499

Edward Chase present this fantastic newly renovated four bedroom and three bathroom house located within a short walk to Upton Park tube station (District and Hammersmith & City Lines) making it an ideal home for all working professionals and families alike who want a modern yet warm home. Some of the main features of the property are a large kitchen diner with integrated appliances including a dishwasher and TV/broadband plug points within every room. The property is available to rent now, call Edward Chase now not to miss this opportunity. Property features;

- 4 double bedrooms & 3 Bathrooms
- Separate spacious reception room
- Kitchen diner - Integrated appliances including washing machine, dishwasher and fridge freezer
- Large basement for storage
- TV and broadband plug points within every room
- Newly renovated throughout to high spec
- Brand new carpets and flooring throughout
- Excellent condition
- Gas central heating combination boiler with mega flo
- 5 burner hob integrated
- Double glazed

windows throughout - Short walk to Upton Park Station (City Line) - Available now Please contact Edward Chase today if you wish to view this property. Lettings Edward Chase estate agents offer a bespoke, professional, ARLA accredited Lettings & Management service. If you would like a free appraisal to gauge the rental potential of your property or you are considering a buy to let purchase, please feel free to contact Sukhbir Basra, Branch Manager to arrange an appointment. A tenant referencing fee of £195 per person will be charged subject to a minimum fee of £500 per property. All fees are inclusive of VAT.



MONEY LAUNDERING REGULATIONS 2003

Intending purchasers will be asked to produce identification and proof of financial status when an offer is received. We would ask for your co-operation in order that there will be no delay in agreeing the sale.